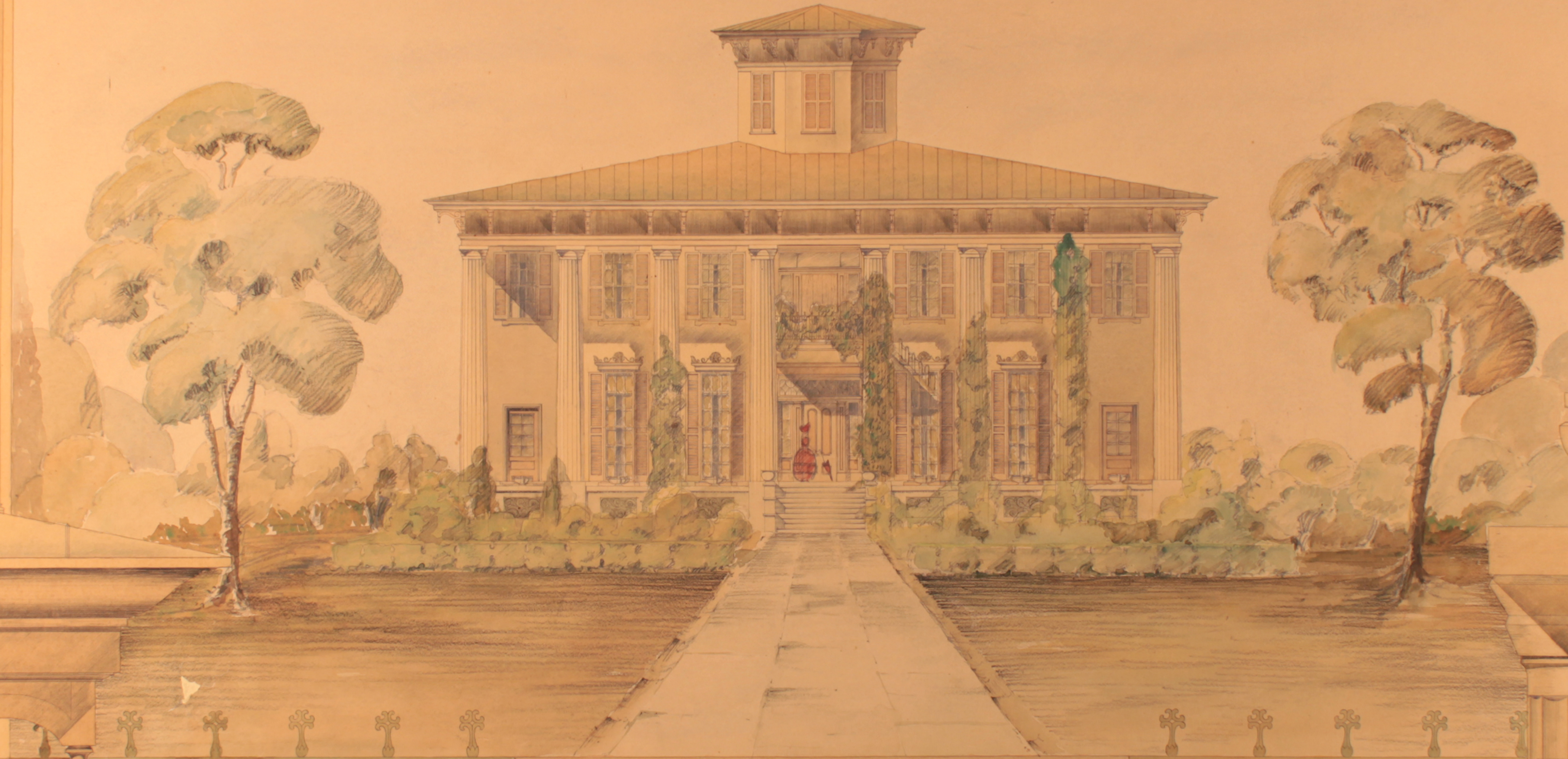


THE VARNER-ALEXANDER HOUSE
TUSKEGEE — ALABAMA



SCALE 1/4" = 1' FT.
ELEVATION 20 IN.
ENTRANCE CHIEF 10 IN.
GILLES-COLUMN-CORNICE 10 IN.
WINDOW HEAD-FOOT 10 IN.
M.F. 1111

1st Floor